

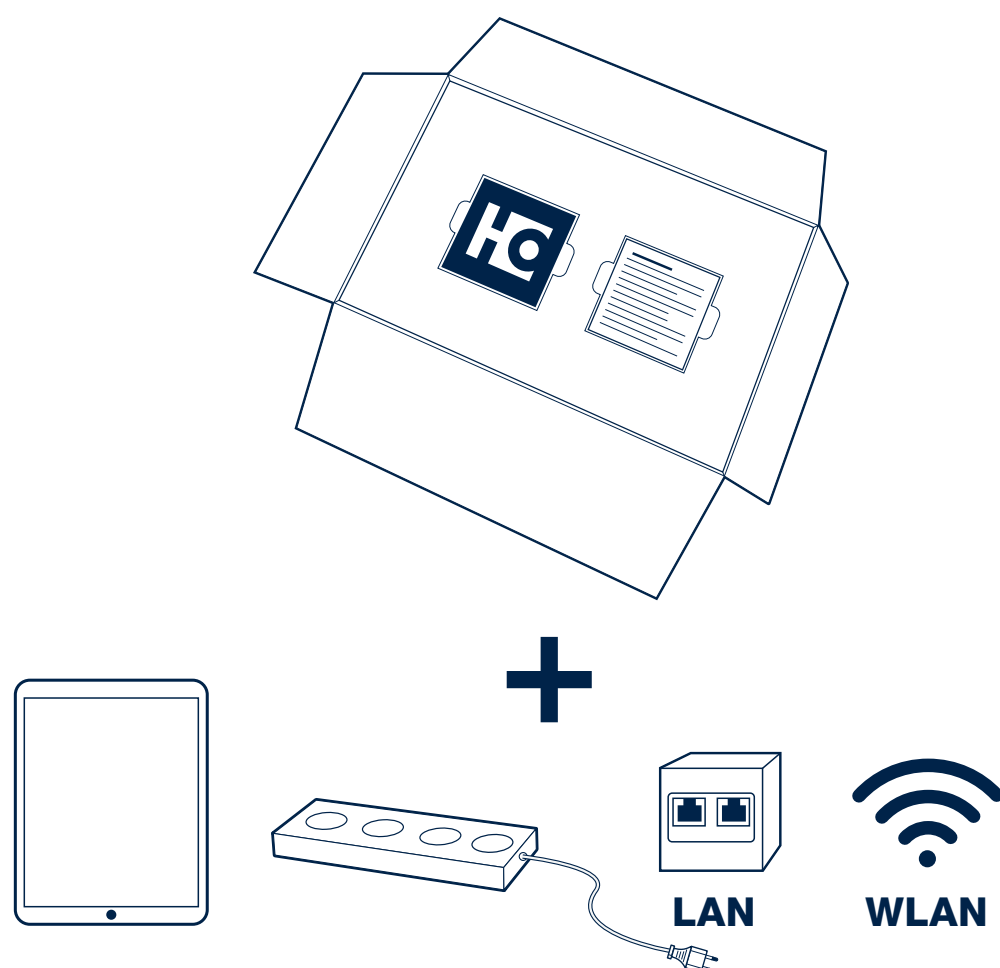
HOMAG



NESTING PRODUCTION SET

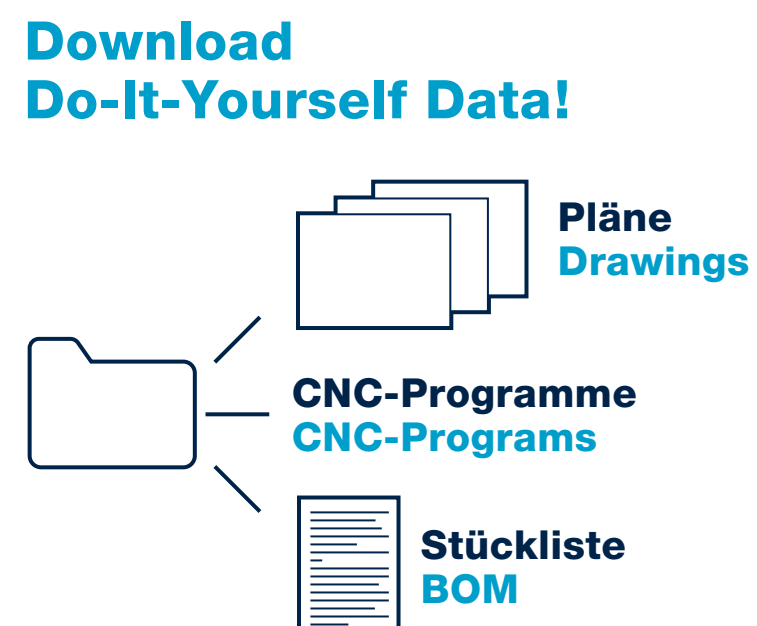
Inbetriebnahme-Anleitung
Installation Guide

1 Auspacken! Get your Hardware!



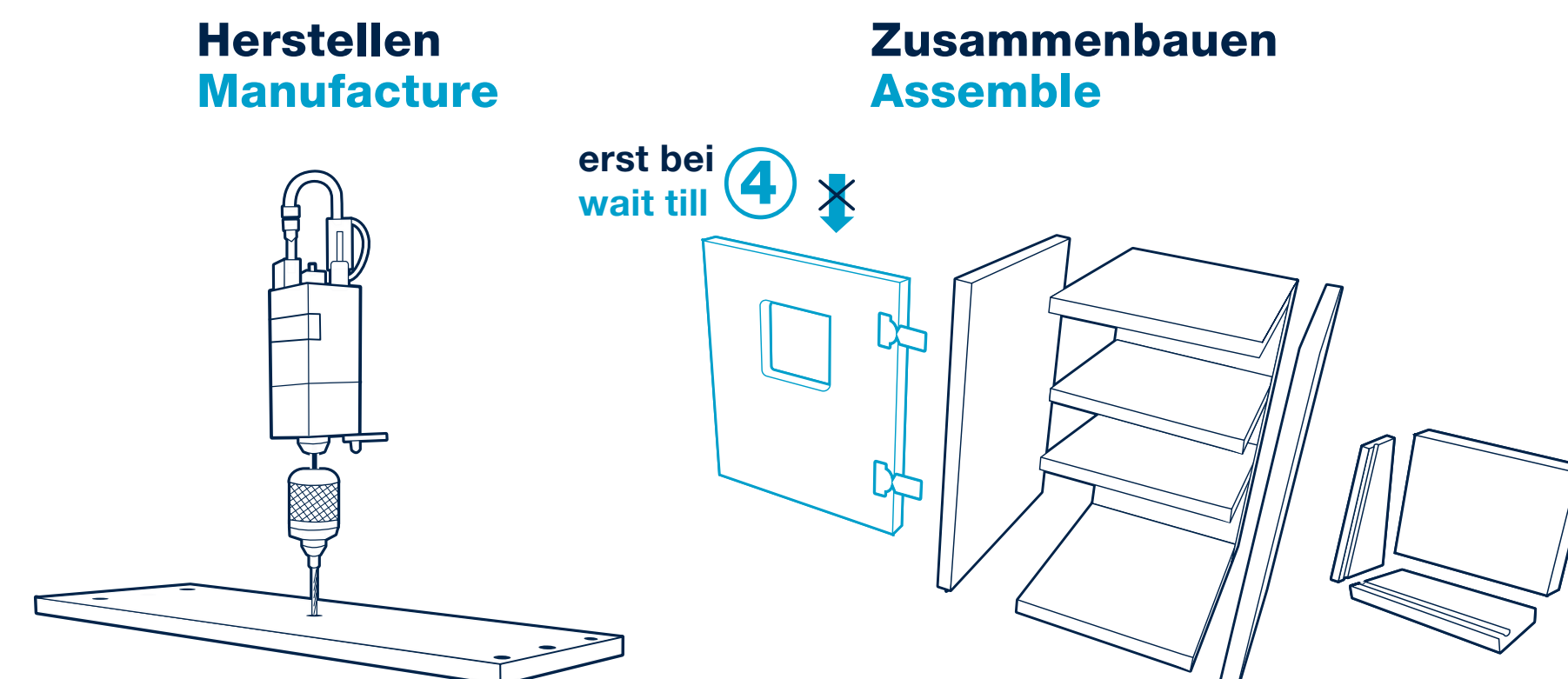
2 Regal bauen Build your rack

Herunterladen der Regalbaupläne!
Download Do-It-Yourself Data!

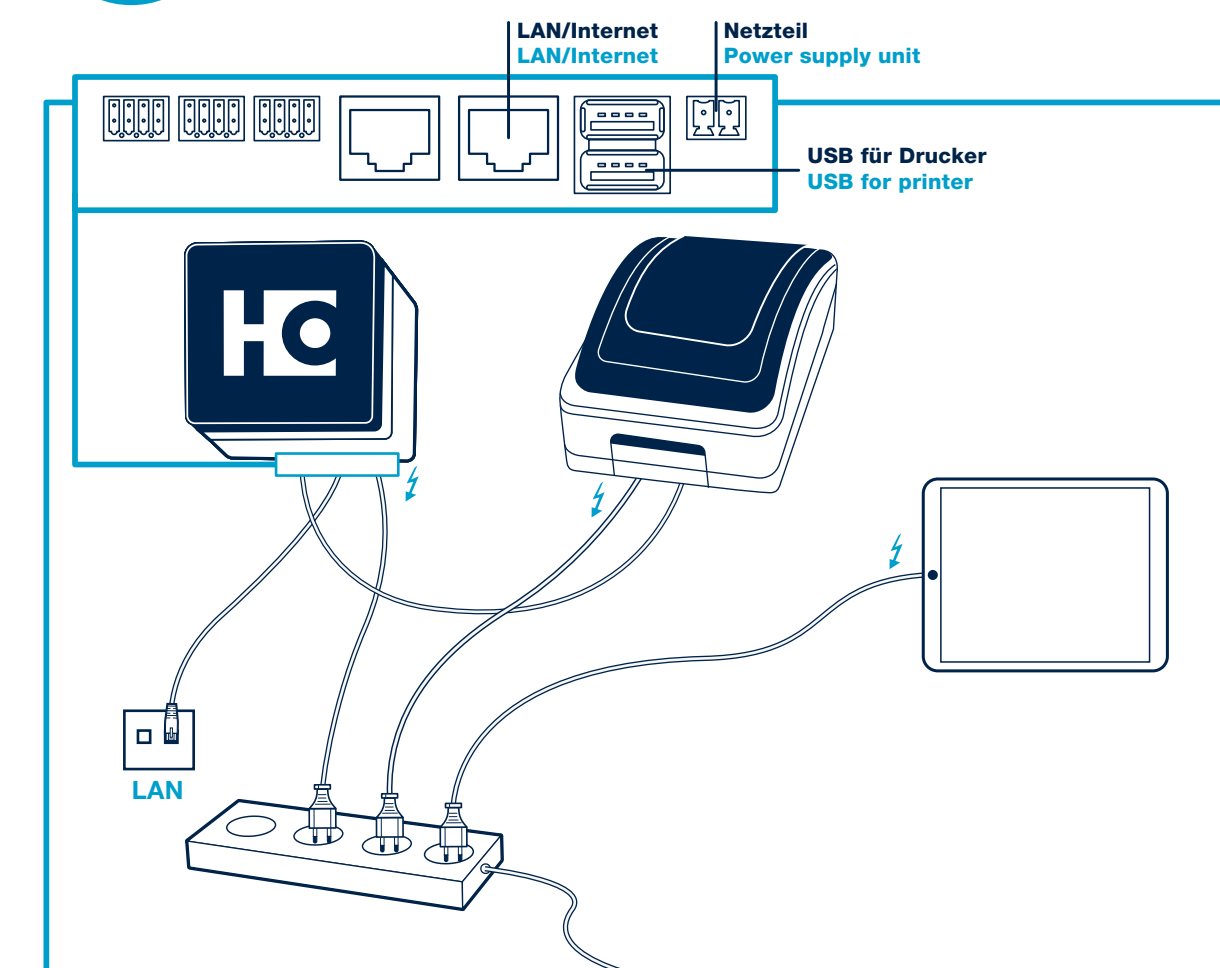


Unter folgendem Link finden Sie:
• Bedienungsanleitung und Sicherheitshinweise
• Download von Bauplänen

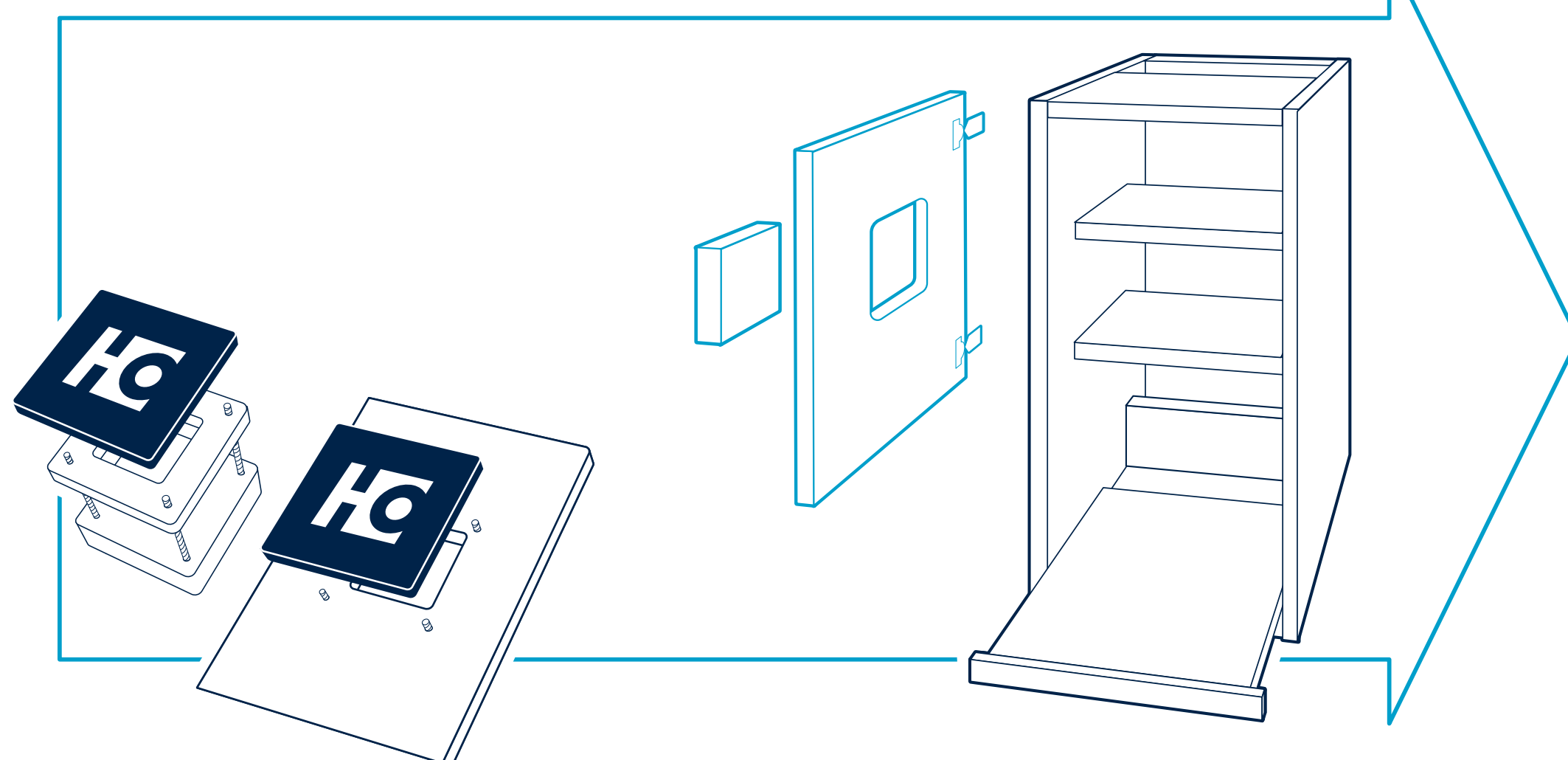
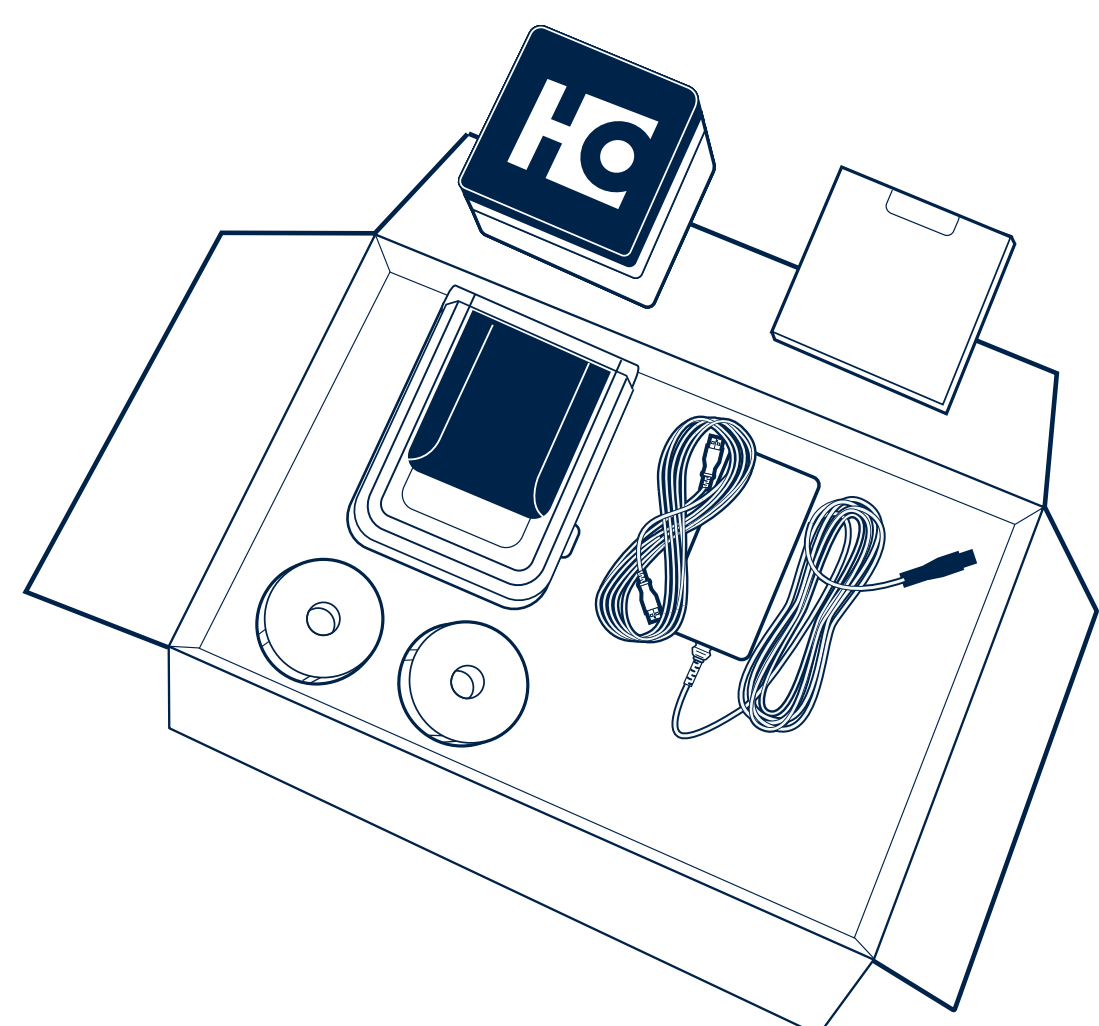
www.homag.com/nestingset



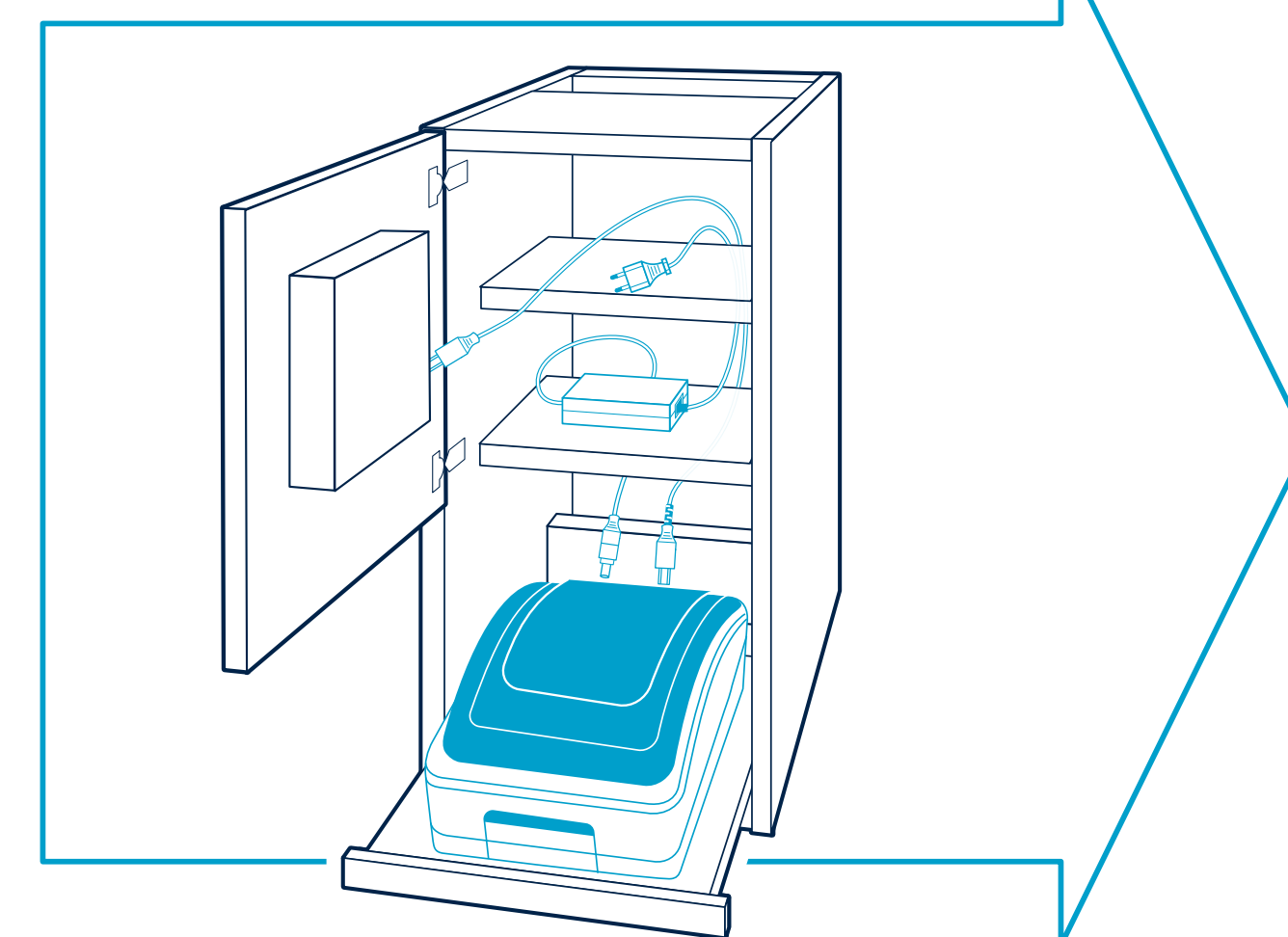
3 Anschluss-Plan Connection plan



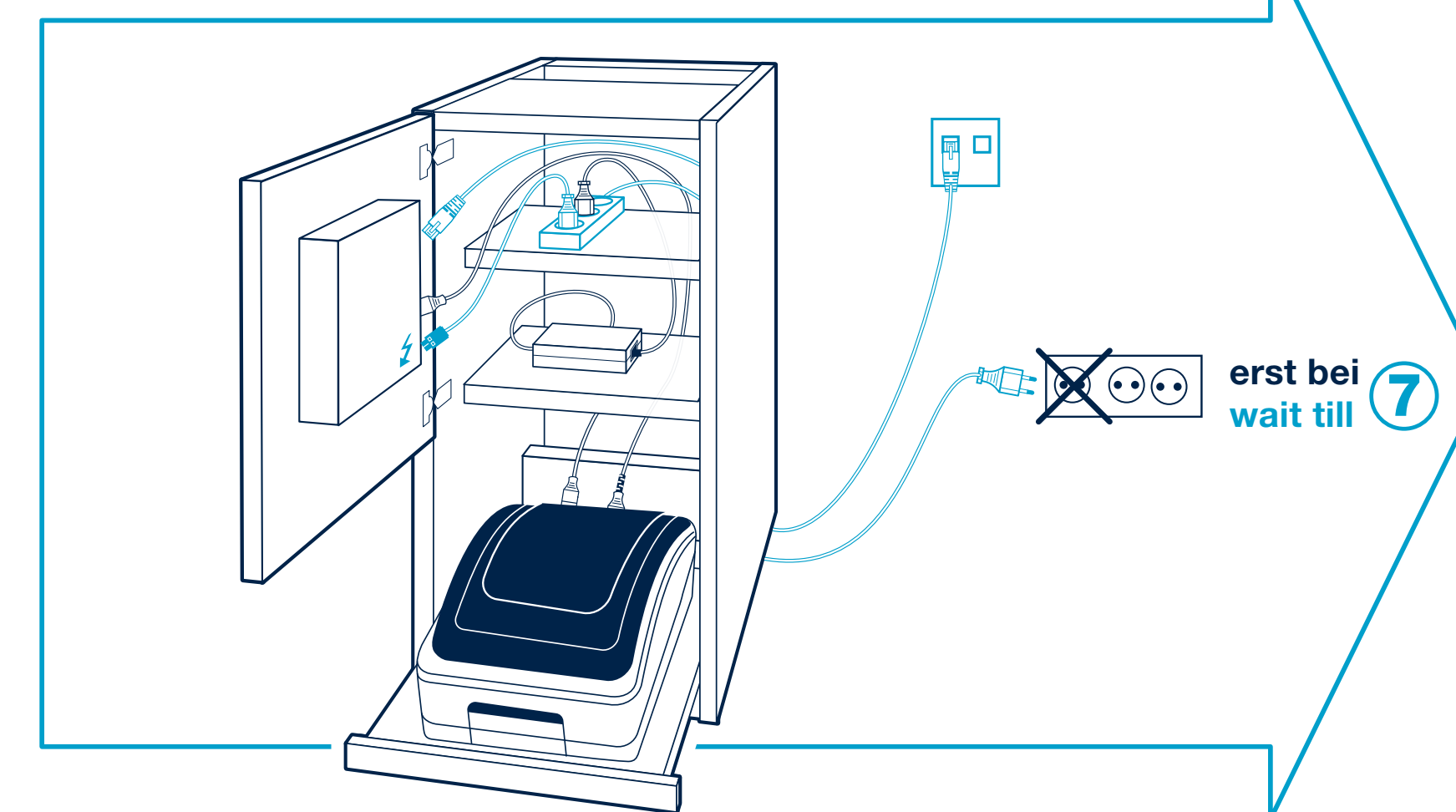
4 CUBE einbauen Install CUBE



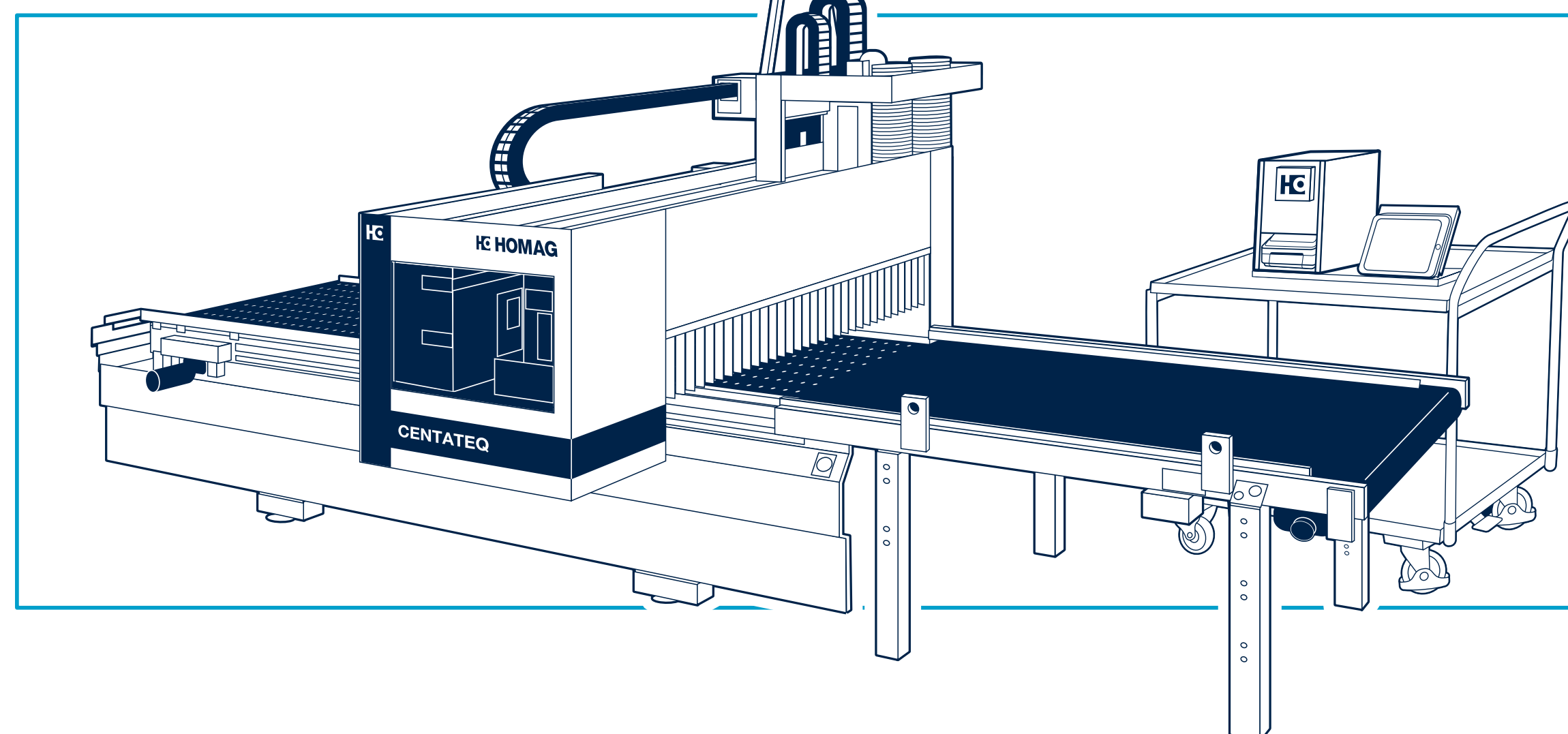
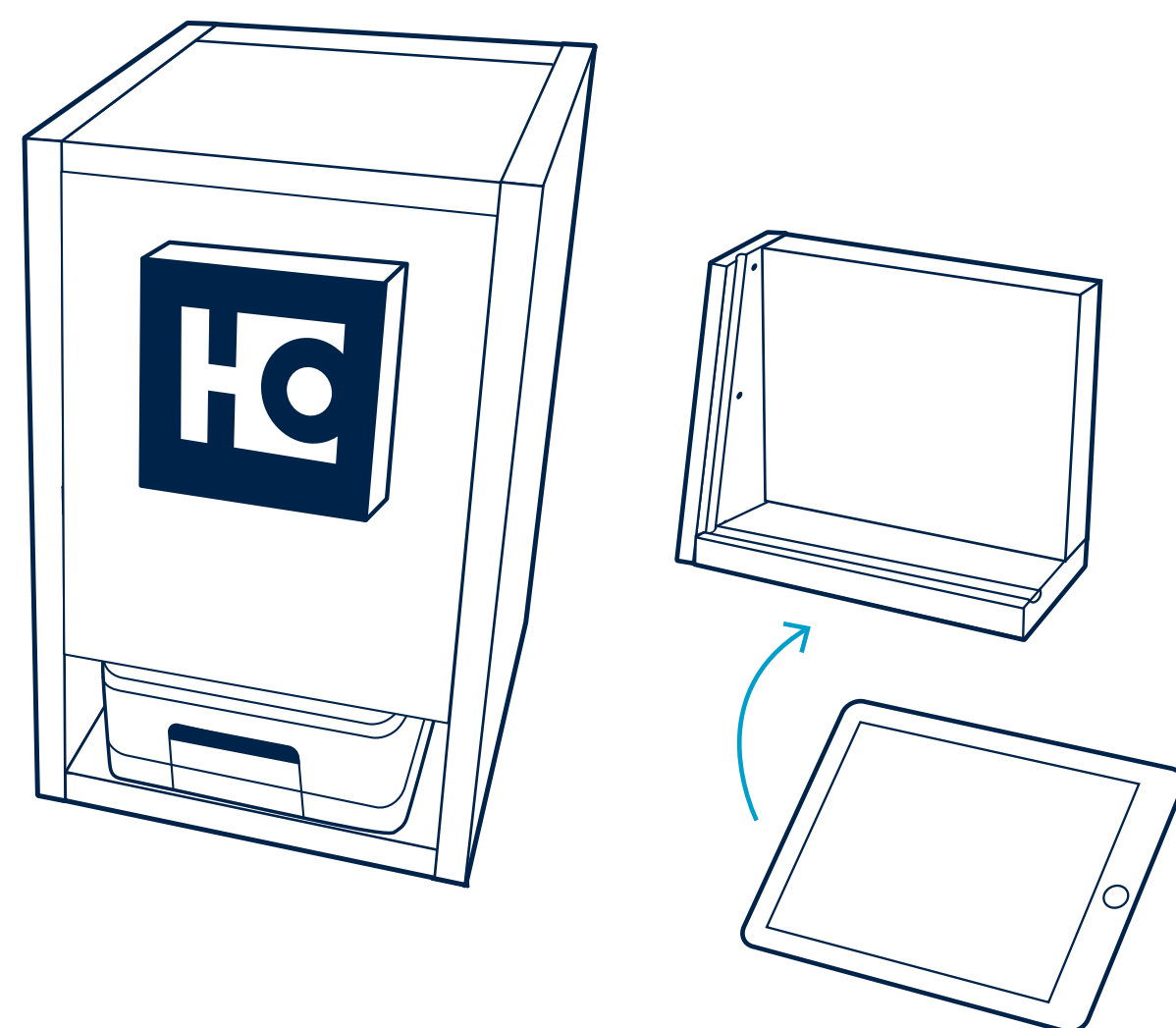
5 Drucker anschließen Install printer



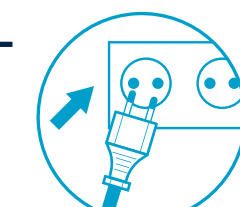
6 CUBE anschließen Connect CUBE



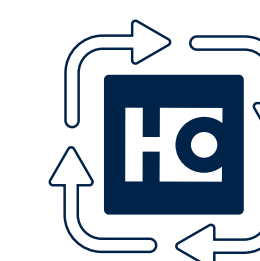
7 In der Nähe der Nestingmaschine aufstellen Place near the nesting machine



Jetzt einstecken!
Plug in now!



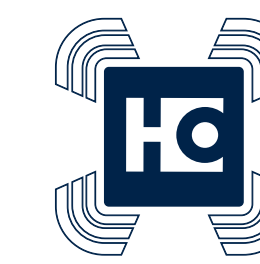
8 Online gehen Go online



Verbindung...
Connecting...



Bereit zur Konfiguration
Ready for configuration

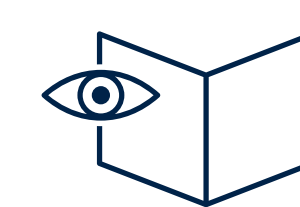


Kein Internet
(Verbindung prüfen)
No Internet
(check Connection)

9 Apps installieren Install apps



Gutschein-Code einlösen
Redeem voucher code



Bitte nutzen Sie die beiliegende Anleitung!
Please use the enclosed instructions!



Blau = Fertig!
Blue = Ready!